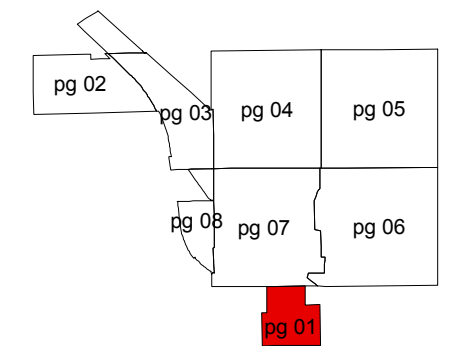
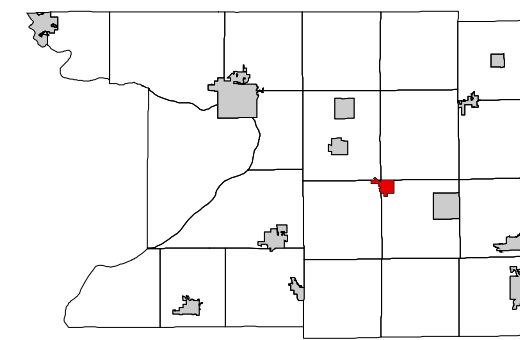


VILLAGE OF RIO

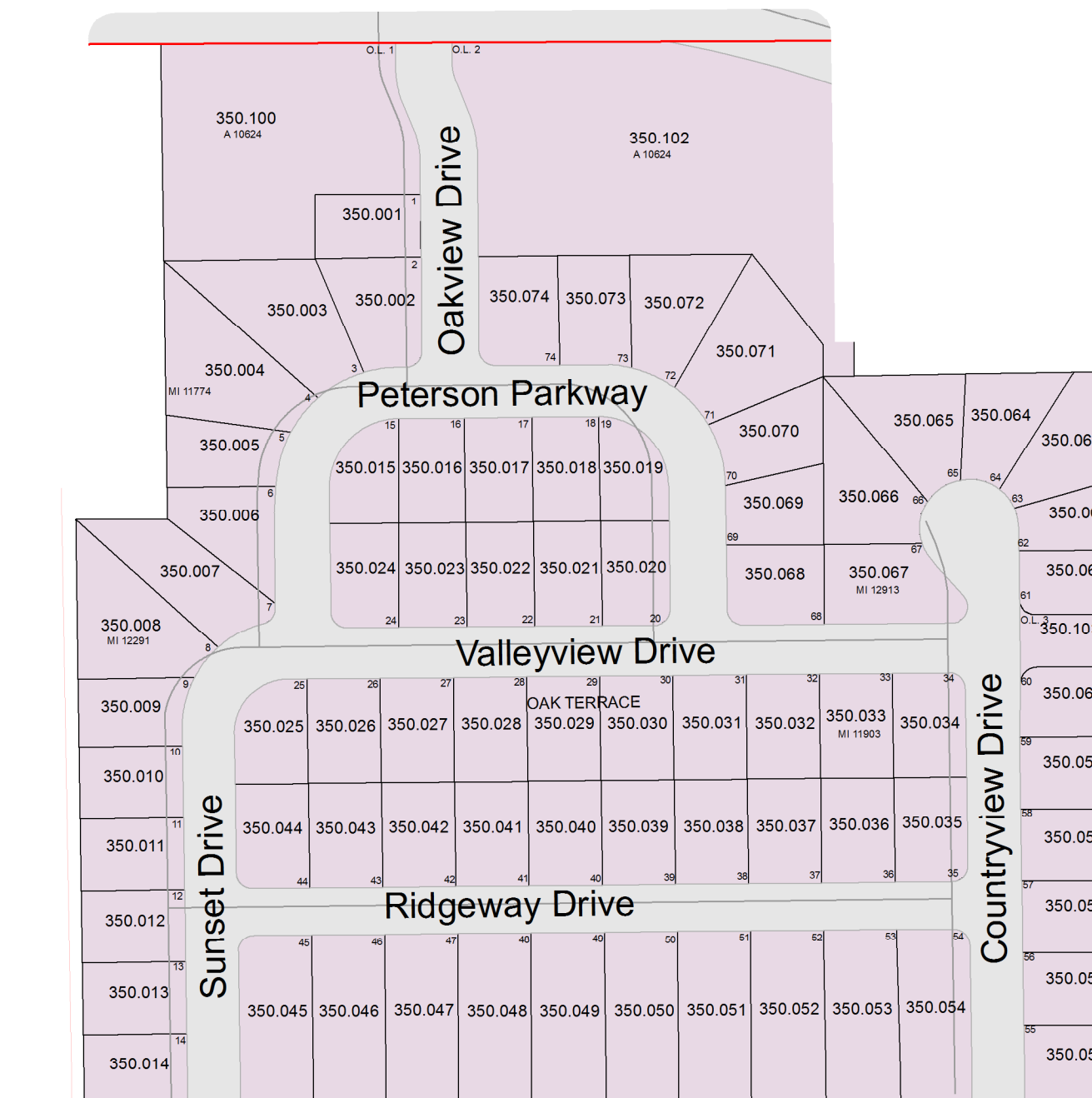
T11N R11E

1 inch = 200 feet 1:2,400



SEE VILLAGE OF RIO - Page 07

SEE TOWN OF OTSEGO



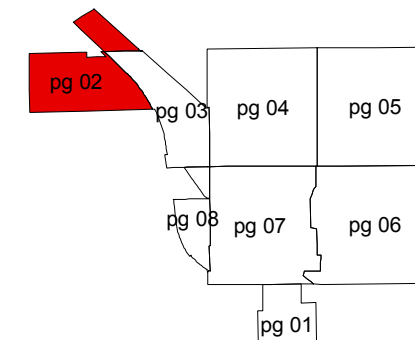
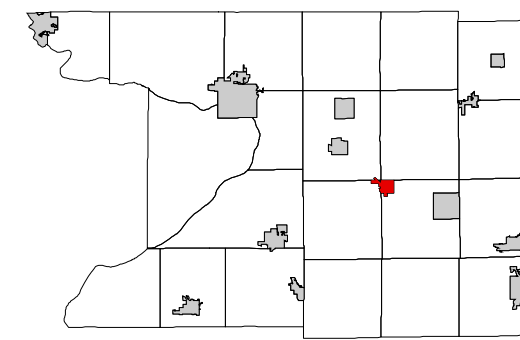
SEE TOWN OF OTSEGO

SEE TOWN OF OTSEGO

VILLAGE OF RIO

T11N R10E

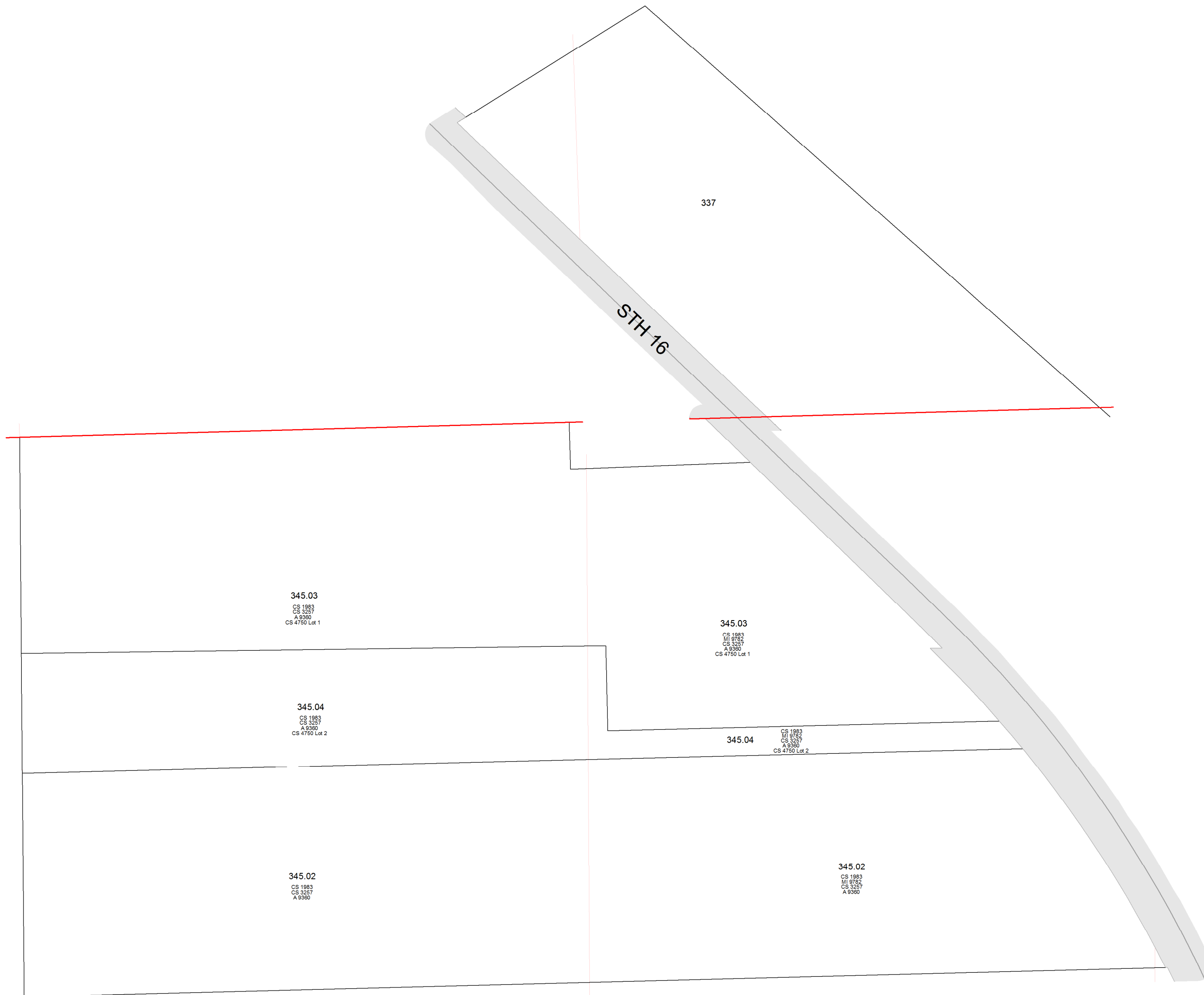
1 inch = 200 feet 1:2,400



SEE TOWN OF WYOCENA

SEE TOWN OF LOWVILLE

SEE TOWN OF LOWVILLE

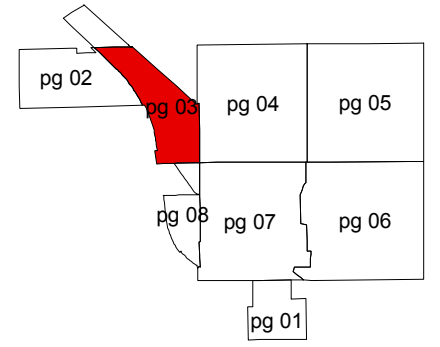
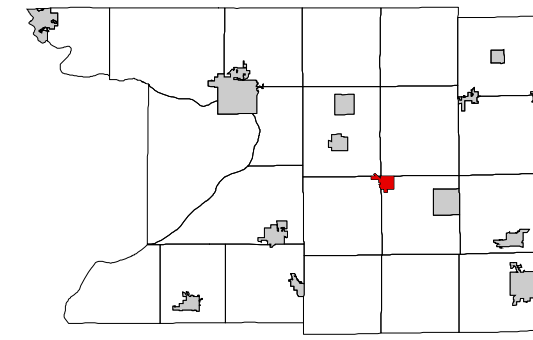


SEE TOWN OF LOWVILLE

VILLAGE OF RIO

T11N R10E

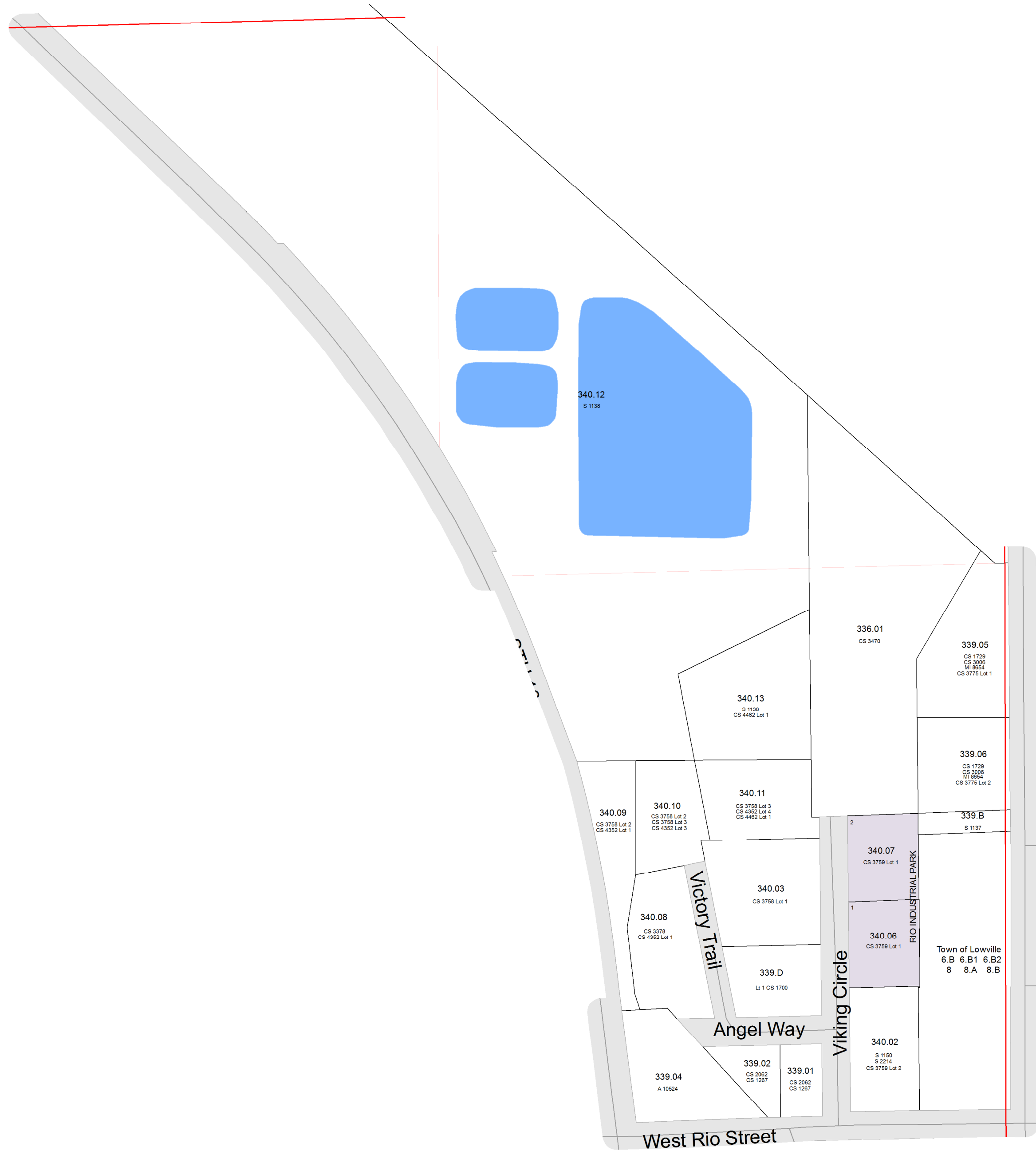
1 inch = 200 feet 1:2,400



SEE TOWN OF WYOCENA

SEE VILLAGE OF RIO - Page 02

SEE VILLAGE OF RIO - Page 04

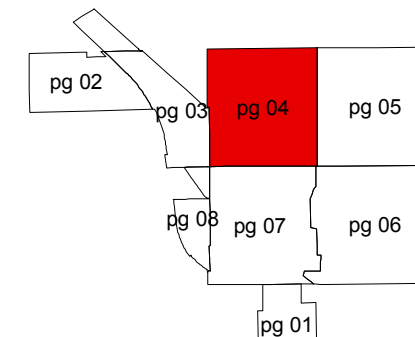
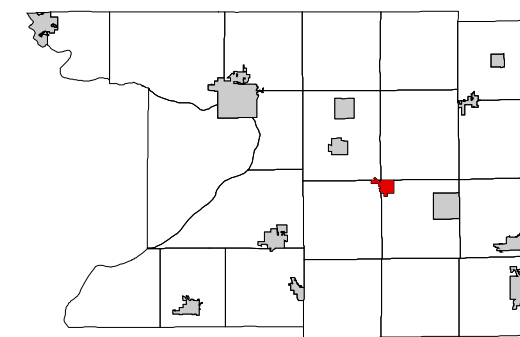


SEE TOWN OF LOWVILLE

VILLAGE OF RIO

T11N R11E

1 inch = 200 feet 1:2,400



SEE TOWN OF SPRINGVALE



SEE TOWN OF LOWVILLE

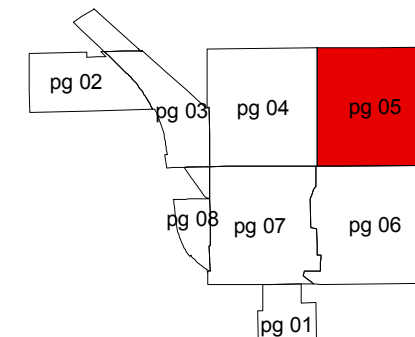
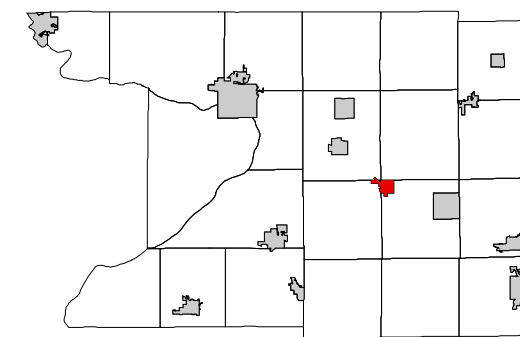
SEE VILLAGE OF RIO - Page 05

SEE VILLAGE OF RIO - Page 07

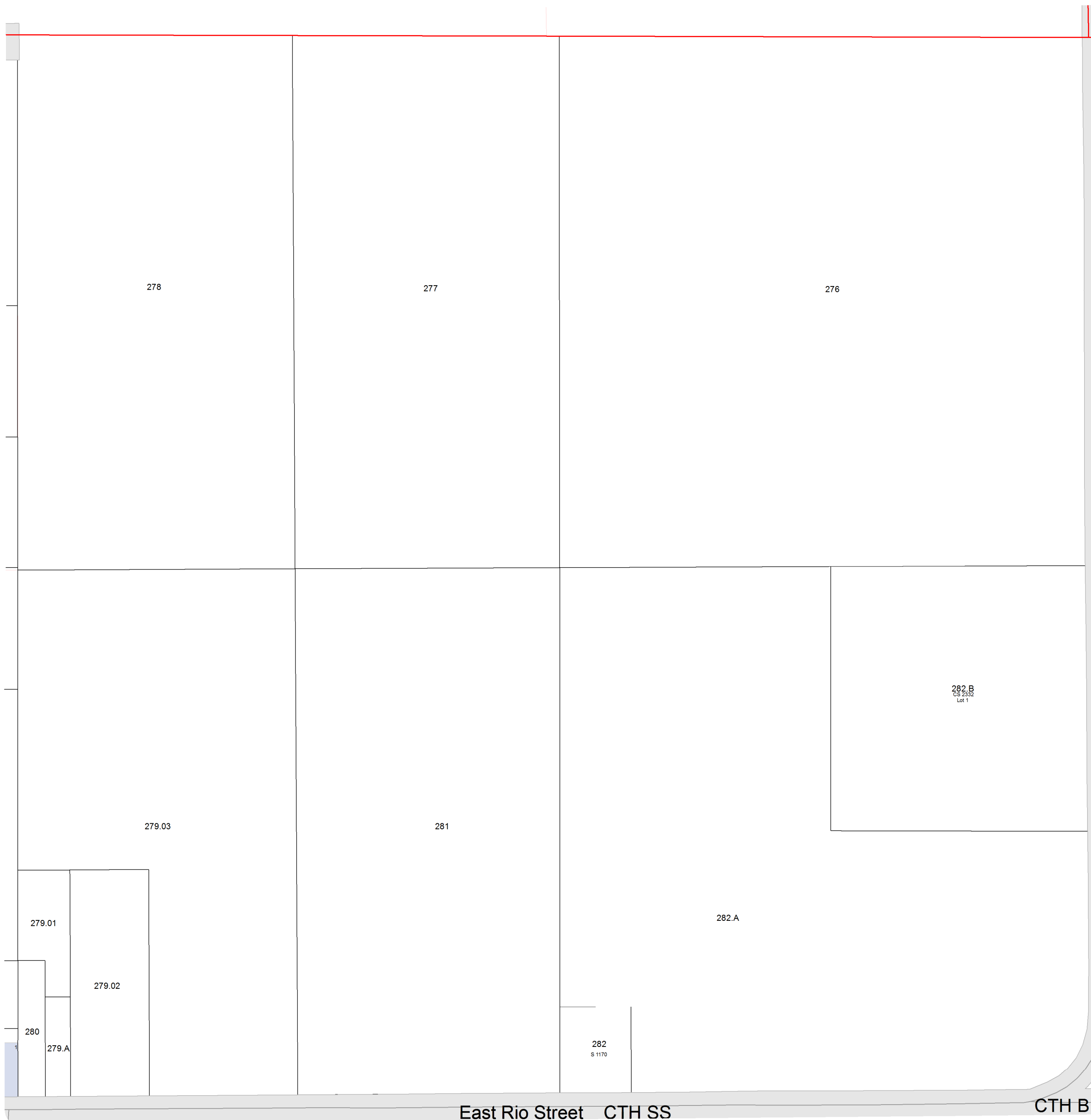
VILLAGE OF RIO

T11N R11E

1 inch = 200 feet 1:2,400



SEE TOWN OF SPRINGVALE



SEE VILLAGE OF RIO - Page 04

SEE TOWN OF OTSEGO

East Rio Street CTH SS

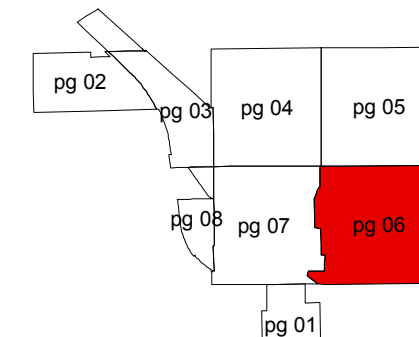
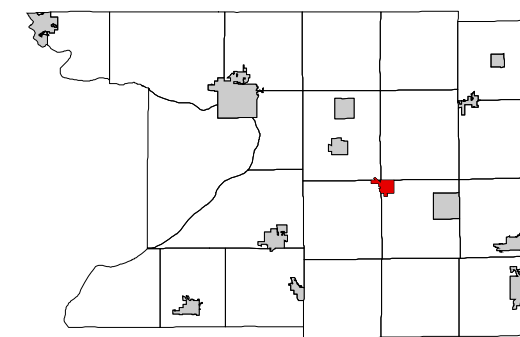
CTH B

SEE VILLAGE OF RIO - Page 06

VILLAGE OF RIO

T11N R11E

1 inch = 200 feet 1:2,400



SEE VILLAGE OF RIO - Page 05



SEE VILLAGE OF RIO - Page 07

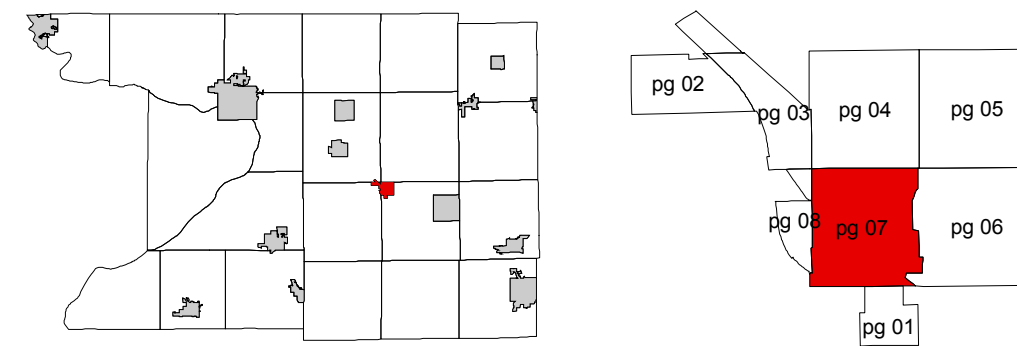
SEE TOWN OF OTSEGO

SEE TOWN OF OTSEGO

VILLAGE OF RIO

T11N R11E

1 inch = 200 feet 1:2,400



SEE VILLAGE OF RIO - Page 04



SEE VILLAGE OF RIO - Page 08

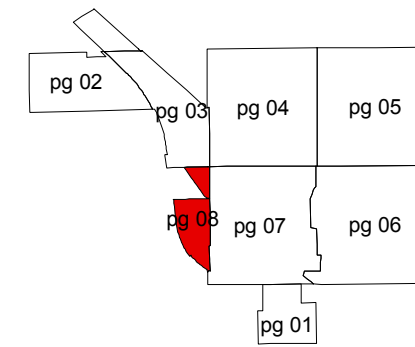
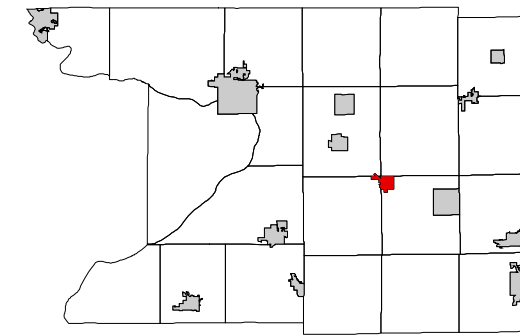
SEE VILLAGE OF RIO - Page 06

SEE VILLAGE OF RIO - Page 01

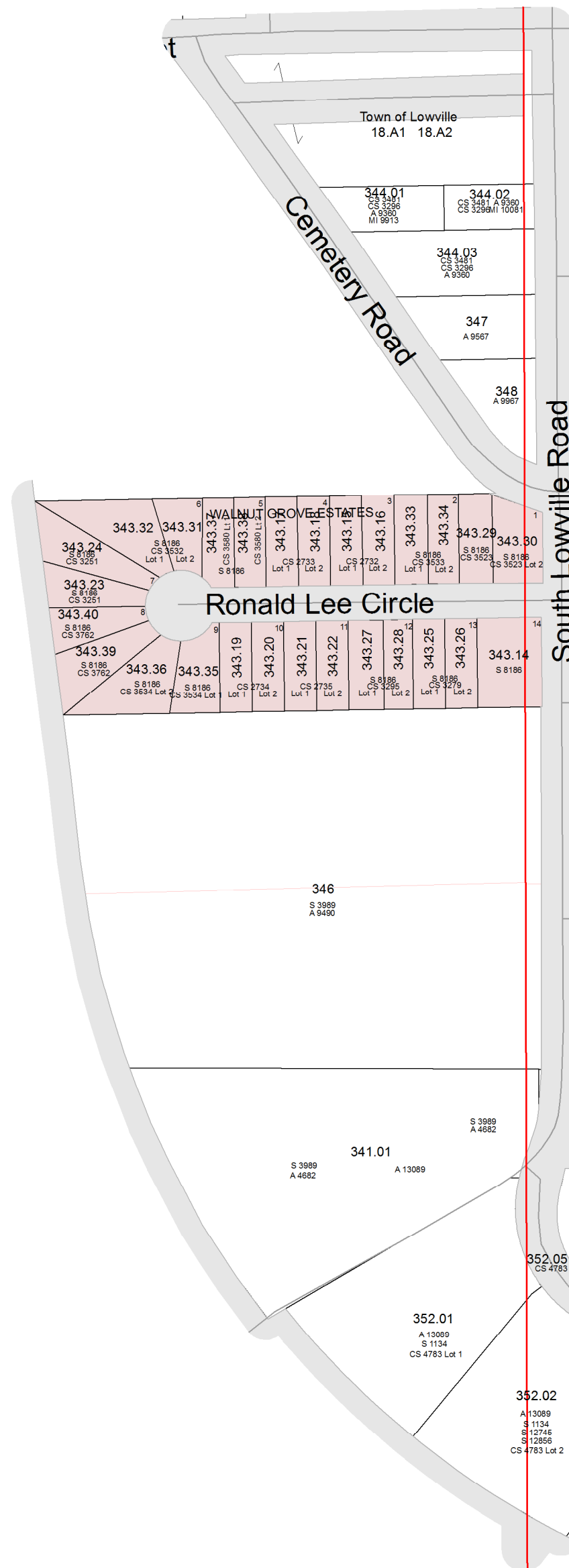
VILLAGE OF RIO

T11N R10E

1 inch = 200 feet 1:2,400



SEE VILLAGE OF RIO - Page 03



SEE TOWN OF LOWVILLE

SEE VILLAGE OF RIO - Page 07

SEE TOWN OF LOWVILLE